



Pooltest 25 Bluetooth®

Operation Manual

Who We Are

“Palintest aim to be the best global provider of water and environmental analysis equipment that enable critical water quality decisions to be made with confidence.”

Palintest develop, manufacture and support a comprehensive range of advanced water and environmental testing equipment. From our United Kingdom headquarters we export to over 100 countries across the globe. Our products are used in a wide variety of applications to protect the environment and safeguard public health.

To find out more about Palintest please visit www.palintest.com or contact your local Palintest partner.

Chapter	Page	Chapter	Page
1 Introduction	4	6 Analysing Samples	15
		Selecting Test Parameters	15
		Dilution Factor	15
2 Quick Start	5	Blanking Pooltest 25 Bluetooth	15
Pooltest 25 Layout	5	Reading with the Pooltest 25 Bluetooth	16
Pooltest 25 Interface	5	Timer	17
Info Panel	5	Changing Result Units of Expression	17
		Follow-on Tests	18
3 Taking a Sample	6	7 Test Methods	19
4 Starting up the Instrument	7	8 Calibration/Validation	25
Power Supply	7	Check Standard Mode	25
Replacing Batteries	7	Enter Check Standard Values	25
Start-up Screen	7	Check Standard Measurement	25
Mode Screen	7		
Choose a Test	7	9 Appendix 1	26
System Mode	7	Photometric Testing Hints and Tips	
Check Standard Mode	7		
5 System Mode	8	10 Appendix 2	27
Log	8	Troubleshooting	
Operator ID	8		
Sample ID	9	11 Appendix 3	30
Bluetooth	10	Technical Specifications	
USB Interface	11		
Units	12	12 Appendix 4	31
Dilution Factor	12	Spares and Consumables	
DPD Range	12		
System Lock	12	13 Appendix 5	32
Water Balance	12	Palintest Aqua Pal App and the Palintest Portal	
Temperature	13		
Language	13		
Set Time/Set Date/Date Format	13		
Time Out	13		
Back Light	13		
LCD Contrast	14		
Version	14		

1.0 Introduction

The Palintest Pooltest 25 Bluetooth is a direct-reading, waterproof photometer for determining key water quality parameters for swimming pools, hydrotherapy pools, hot tubs and spas. Designed for both portable and static use, the Pooltest 25 Bluetooth should always be used with genuine Palintest reagents for optimal performance.

The fundamental operating technique applied to the Pooltest 25 Bluetooth is based on the principles of optical absorbance and scattering of visible light.

Optical absorbance techniques are based on the use of Palintest (spectro)photometric reagents, creating visible colours with specific analytes upon reaction. The intensity of colour produced is measured with the Pooltest 25 Bluetooth and the data compared to the stored calibration data to deliver the final result.

Optical scattering techniques produce small particles to scatter the source beam, the amount of scatter providing a result for the concentration of parameter under test.

For more information regarding the science behind both photometric and turbidimetric analysis technology please visit www.palintest.com/know.

The Pooltest 25 Bluetooth is provided with programmed methods for a comprehensive range of water quality parameters. Upon choosing a test

the instrument automatically selects the required parameters for accurate analysis including wavelength and reaction time. On completion of some tests optional follow-on tests are available plus results can be converted to alternative units of expression e.g. mg/l to ppm, N or NH₃.

The Pooltest 25 Bluetooth offers a choice of connectivity to download all or selected results via Bluetooth 4.0 wireless connectivity or USB connection.

Bluetooth 4.0 (also known as Bluetooth SMART or Low Energy) connection allows seamless data exchange using the Palintest Aqua Pal app, available for iOS and Android devices. See Appendix 5 for more details.

USB connection via the port located at the rear of the instrument provides a choice of either 'Hard Disk' mode or serial communication mode. See Section 6.5 for more details.

The Pooltest 25 Bluetooth offers a choice of either mains power via the USB port or using three 1.5V 'AA' batteries (supplied).

The Pooltest 25 Bluetooth is delivered with a two year warranty and a full range of service, calibration and technical support. Additional resources are available at www.palintest.com relating to both products and applications.

2.0 Quick Start

2.1 Pooltest 25 Bluetooth Layout



2.2 Pooltest 25 Interface

The LCD screen features a selectable backlight with the screen separated into four clear, easy to read zones.



1 Mode or Test Identification.

- 2 Dialogue screen - prompts and choices will be displayed as a list. Select using up/down arrows.
- 3 Info Panel - displays status icons, date/time and Sample/Operator ID.
- 4 Action select - choices are displayed as a row. Use left/right arrows to select.

2.3 Info Panel Icons

Icons	Description
	Battery status
	Bluetooth connected
	Bluetooth on, not connected
	Upper/lower case text/number entry
	USB connected
	Hard Drive/COM port mode

3.0 Taking a Sample

The first critical step in any analysis is taking a representative sample. When selecting a sample point a number of care points are recommended as follows:

- Ensure the sample point is safe to access and follow all relevant/required precautions
- When sampling from a tap or outlet, remove any attachment and clean the tap/outlet with a dry cloth before allowing to run for 1 minute prior to sample collection
- When sampling from a pool or spa take the sample as near as possible to the centre of the pool and at least 20cm below the surface of the water
- Rinse any sample container repeatedly with the sample to prevent any cross contamination from previous samples
- Once collected the sample must be processed immediately or as quickly as possible, especially for highly reactive species such as chlorine for example. The use of a portable field test kit makes this possible. However if the delay between sample collection and analysis is likely to be several hours chill the sample to preserve and prevent potential sample deterioration
- Samples containing solid particles can interfere with photometric analysis. Either allow solids to settle and decant the clear liquid or filter the sample prior to analysis

4.0 Starting up the Instrument

4.1 Power Supply

The Pooltest 25 Bluetooth is designed to be powered either from alkaline batteries or via the USB port. When operating on battery power, the battery level is indicated on the Info Panel. A minimum voltage of 3.0V is needed to operate the photometer and a flashing battery symbol indicates a critically low battery. Change batteries immediately or switch to alternative USB power. The Pooltest 25 Bluetooth will automatically power down when power is no longer capable of providing acceptable performance.

To power via the USB port, use the supplied cable connected either to the mains adaptor or a PC. The USB icon will appear when the USB connection is made and battery power will no longer be consumed.

The Pooltest 25 Bluetooth has a back-up battery mounted internally to save instrument settings and data during power loss and instrument idle periods.

4.2 Replacing Batteries

The battery compartment is located on the base of the instrument and secured by four screws. Remove the cover and install a complete set of new batteries, observing the correct polarity as indicated. Use 3 x 1.5V 'AA' alkaline batteries or equivalent. See Appendix 2 for more details.

To avoid corrosion damage through leakage, remove batteries from the instrument if it is to be stored or left unused for a long period.

4.3 Start-up Screen



The default start screen on power up is the 'Choose a Test' screen.

To access the Mode menu press the left arrow key to highlight 'Back' and press OK on the keypad. To choose a test use the up/down arrows to scroll through the list and press OK on the desired parameter or use the direct access.

4.4 Mode Screen



The Pooltest 25 has three operating modes as follows:

Choose a Test

The Choose a Test mode is the standard operating mode for taking photometer readings and is the default start-up screen on power up. See Section 8 for more information.

System Mode

Personalise your Pooltest 25 Bluetooth and manage stored data within the System mode. Options include setting Operator/Sample IDs, interrogating the result log and defining the instrument operating conditions. See Section 6 for further information.

Check Standard Mode

Validate performance of your Pooltest 25 Bluetooth using Palintest Check Standards. See Section 9 for more information.

5.0 System Mode

Personalise your Pooltest 25 Bluetooth and access the data log via the System Mode.



Scroll up or down using the appropriate keys to see all available options. The options and available settings are as follows:

5.1 Log

The Pooltest 25 Bluetooth has an internal data log for up to 1000 data points. The data is stored automatically upon completion of the test and automatically overwrites the oldest result when the memory is full. The data log is unaffected by power on/off.

Each data point consists of the following information and is stored in a comma-separated values (CSV) format:



Selecting Log offers two choices:

View - to view individual data points use the up/down keys. Data is stored in chronological order with the most recent result shown by default. Scroll through results using the up/down arrows. Select Back to return to the previous menu.

Clear - the entire log can be deleted from the Pooltest 25 Bluetooth if the instrument is not locked (see **System Lock**). Selecting Clear produces the following screen:



Choose Yes to delete all data, No to return to the previous screen.

Data can be downloaded via either Bluetooth (see **Bluetooth Log Transfer**) or USB connection (see **USB Interface**).

5.2 Operator ID

The Pooltest 25 Bluetooth offers the option to create up to 12 unique alphanumeric Operator IDs. Operator IDs are added to the result data automatically but deleting IDs does not affect the result log.



To create a new Operator ID, select Operator ID and use the up/down keys to select a blank field. Select New and press OK.

Alphanumeric characters are entered/edited using the 0-9 keys or the up/down keys. Press and hold the 1 key to toggle between upper case, lower case and numeric characters.

After entering a character, the cursor automatically moves to the next position if no key is pressed. Alternatively press the right key.

Up to 10 characters can be added for Operator IDs, including spaces.



To edit characters use the left/right keys to select the desired character. Press and hold the left key to delete the character or change the character using the entry mode.

When the Operator ID is correct press the OK key to create the ID and return to the Operator ID list. The new Operator ID will be displayed in the Operator list.



Choose the Operator ID to be used by scrolling through the list and pressing the OK key on the desired choice. The instrument will return to the System menu.

To modify or delete an existing Operator ID, highlight the ID and select Edit. Choose either Edit to modify the existing entry or Delete to remove it from the list.

5.3 Sample ID

The Pooltest 25 Bluetooth offers the option to create up to 24 unique alphanumeric Sample IDs. Sample IDs are added to the result data automatically but deleting IDs does not affect the result log.



To create a new Sample ID, select Sample ID and use the up/down keys to select a blank field. Select New and press OK.

Alphanumeric characters are entered/edited using the 0-9 keys or the up/down keys. Press and hold the 1 key to toggle between upper and lower case characters.

After entering a character, the cursor automatically moves to the next position if no key is pressed. Alternatively press the right key.

Up to 10 characters can be added for Sample IDs, including spaces.

To edit characters use the left/right keys to select the desired character. Press and hold the left key to delete the character or change the character using the entry mode.



When the Sample ID is correct press the OK key to create the ID and return to the Sample ID list. The new Sample ID will be displayed in the Sample list. Choose the Sample ID to be used by scrolling through the list and pressing the OK key on the desired choice. The instrument will return to the System menu.

To modify or delete an existing Sample ID, highlight the ID and select Edit. Choose either Edit to modify the existing entry or Delete to remove it from the list.

5.4 Bluetooth

The Pooltest 25 Bluetooth features the latest Bluetooth 4.0 (also known as Bluetooth Low Energy or Bluetooth SMART) for wireless communication with external devices.

The Palintest Aqua Pal app provides seamless data exchange with the Pooltest 25 Bluetooth, data trend analysis and user-defined action limits for key parameters.

Additional data management functionality is provided by the Palintest Portal (www.palintestportal.com). Uploaded data can be shared with colleagues and customers within your User Group(s) and integrated into customised reports. See Appendix 5 for more information on the Aqua Pal app and the Palintest Portal.



There are four options available in the Bluetooth menu:

- Bluetooth Communications ON - activate the Bluetooth and make the Pooltest 25 Bluetooth visible for connection/pairing.
- Bluetooth Communications OFF
- Bluetooth Log Transfer - transfer historical log data to the Aqua Pal app when connected to a remote device
- Bluetooth Device ID - create a unique device name for the Pooltest 25 Bluetooth to discriminate between multiple connections

Bluetooth Communication On

Select this option to enable Bluetooth communications allowing the instrument to be paired with a suitable Bluetooth SMART enabled device. Visit www.palintest.com/know for more information regarding Bluetooth SMART devices.

The Bluetooth icon is shown in the Info Panel when Bluetooth is enabled. Connection status is shown as follows:

- ✱✓ indicates Bluetooth is activated and connected to an external device
- ✱✗ indicates Bluetooth is activated but the Pooltest 25 Bluetooth is not connected to an external device

Bluetooth Communication Off

Selecting this option disables the Bluetooth communications module. The Bluetooth icon is not visible on the Info panel.

Bluetooth Log Transfer

Selecting this option transfers all or a selected group of results stored in the log to the paired mobile device.

The Pooltest 25 Bluetooth will validate the paired connection and confirm readiness to transfer.



Transferring selected data will require specification of the result log window e.g. from result 40 to result 100 to be transferred selectively.

Press OK to transfer the data log. The data will transfer in series. Each data point is validated by the Aqua Pal app prior to upload of the next.



If the connection is lost the Pooltest 25 Bluetooth will prompt for re-connection. If connection is not required or possible press Exit to disable Bluetooth and cancel the log transfer.

The message 'Log transfer is complete' will be shown when all data points have been uploaded successfully. Press OK to return to the previous menu.

Bluetooth Device ID

A number of Pooltest 25 Bluetooth instruments may be available to connect to a remote device, although only one active connection is possible at any time. A user-defined Bluetooth Device ID ensures simple pairing between the desired Pooltest 25 Bluetooth and the Palintest Aqua Pal app.

Creating and/or editing Bluetooth Device ID is identical to Operator and Sample ID creation.

5.5 USB Interface

The waterproof USB interface provides both communication between the Pooltest 25 Bluetooth and a PC and an alternative mains power source via the adaptor.

When connected the USB icon will appear, replacing the battery icon in the Info Panel, as power will be preferentially drawn from the external source.

The USB data interface has a choice of two operating modes - Hard Drive and COM Port. The current status of the USB connection is shown on the Info panel when the USB lead is connected.

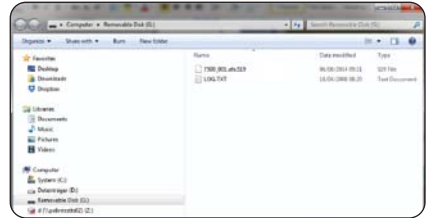
Toggle between COM Port and Hard Disk mode in the System -> USB menu by selecting the desired option.

The USB connection supports software update and data download through a simple 'drag and drop' approach when operated in Hard Disk mode.

Hard Drive

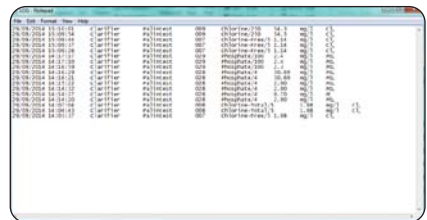
The instrument appears as a removable hard drive when connected to a PC in Hard Disk mode. Upon connection the remote drive will have the following files included:

- Pooltest 25_***.afx.*** where * represent version numbers of software - this is the operating software for the Pooltest 25 Bluetooth
- Log.txt - the data log file stored in a comma separated value (csv) format



Operating software or calibration library can be updated by dragging a new version to the instrument - contact support@palintest.com for new software if this option is required. Any updates to operating software will be notified via the www.palintest.com/know portal.

Downloading the result log is carried out by dragging the LOG.txt to the local desktop and opening the file with any program that can open CSV format files.



For more information regarding extracting and opening result logs using the Hard Disk mode visit www.palintest.com/know.

COM Port

The instrument behaves as if connected to the PC serial port via RS232 when connected in COM Port mode, allowing remote control from an external software system and data upload.

This allows backwards compatibility with software written for earlier models of Palintest instruments. In this mode, the PC requires installation of a USB virtual COM Port driver, available from www.palintest.com/know, and the availability of software operating as a terminal server.

A large number of third-party software systems are available to provide data upload and remote control of testing using the COM port mode. Please contact your local Palintest representative for more details.

5.6 Units

The Pooltest 25 Bluetooth offers the choice of result expressed in mg/l, ppm, mmol/l, μ mol, g/l and μ g/l.



Changing the result units will not affect the result log.

5.7 Dilution Factor

When samples are above the test range, indicated by >> on the result screen, a dilution procedure can be used. Setting Dilution Factor to On will prompt the Pooltest 25 Bluetooth to automatically request the dilution factor when carrying out a test. Change the dilution factor by using the up/down arrows or manually type the dilution factor. The instrument will automatically correct the result for the dilution and display the corrected result (which will also be stored in the result log).

The maximum dilution factor permitted is 99. If the calculated result exceeds the available number of permitted characters >> will be displayed.

NOTE: do not use sample dilution when measuring pH or alkalinity.

5.8 DPD Range

The Pooltest 25 Bluetooth operates in a choice of DPD ranges, depending on the pool treatment programme. Two choices are available and only one range can be used at any time:

- 0-5** the 'standard range' of 0-5mg/l (ppm) Cl_2 . In this range the AP 011 and AP 031 DPD reagent packs are suitable
- 0-10** the 'extended range' of 0-10mg/l (ppm) Cl_2 . In this range the AP 013 DPD XF and AP 033 DPD XF/XT packs will be required to carry out the testing.

The selected range of DPD will be indicated in the Test List e.g. Test 001 Chlorine-Free/10 indicates the extended range has been selected and the DPD XF reagent should be used.

5.9 System Lock

To prevent unauthorised or inadvertent changes to the System settings or log deletion a four digit code can be used to lock several options.

The default code is set to 6812. To change the System Lock code, follow the on-screen prompts to choose a memorable four digit number.

When the System Lock is applied, the items accessible within the System Mode are limited until the unlock code is entered. Access is limited to viewing the result log, adjusting the backlight, contrast and Bluetooth settings.

5.10 Water Balance

Two options are available for the Test 77 Water Balance scale:

- Palintest** uses the simplified Palintest scale which assumes values for Total Dissolved Solids (TDS) and temperature and removes the need to measure these parameters.
- Langelier** uses the results from a TDS/temperature meter to calculate the Langelier Saturation Index (LSI) value.

For more information, see both the test method on page 26 and visit www.palintest.com/know for more information regarding the importance of Water Balance and the relationship between the two scales.

5.11 Temperature

Choose between °C and °F. The temperature setting is used during the Langelier Saturation Index when selected from the Water Balance option.

5.12 Language

Select the desired local language for operation, choosing from English, French, Spanish, German, Italian and Chinese (Mandarin). The selection of language will also adjust appropriate tests and units to local convention as required.

5.13 Set Time/Set Date/Date Format

All test results are recorded automatically in the Data Log and appended with date and time (plus additional information). Date and time are stored on an internal clock, supported by a coin cell battery. To correct the time select Set Time from the System menu. Use the up/down keys to adjust the hour; press the right key to select and adjust the minutes.



Press OK when the correct time is set.

To correct the date select Set Date from the System menu.

Use the up/down keys to adjust the day/month/year, using the left/right keys to select the field.



Press OK when the correct date is set.

The Date Format can be set to DD/MM/YYYY or MM/DD/YYYY as required. To select the required format highlight the desired choice and press OK.

5.14 Time Out

When operating using battery power the Pooltest 25 Bluetooth provides automatic power-off as a power-saving measure. Three settings are provided:

- Normal** 5 minutes
- Long** 15 minutes
- Off** (disables Time Out)

The time intervals begin after the last key is pressed or activity takes place.

Time Out is automatically disabled when the instrument is powered by USB supply and during a Bluetooth data log transfer.

5.15 Back Light

The instrument display features a high intensity backlight to support use in low light conditions. The backlight is designed to use minimal energy but activating will naturally consume battery power more rapidly. The settings available are:

- Backlight Auto-Dim** Backlight activates on any key press and dims after 15 seconds automatically.
- Backlight On** Backlight is on permanently
- Backlight Off** Backlight is off permanently

5.16 LCD Contrast

In addition to the Backlight, the default contrast setting for the display can be adjusted using the up/down keys when light conditions are difficult. The display provides a sequence of alternating squares to give visual indication of the correct settings to apply.



When complete/acceptable press the OK key.

5.17 Version

The serial number of the instrument and the software version are displayed. The instrument serial number will be required for technical support and servicing/warranty and can also be found on the case of the instrument.



6.0 Analysing Samples

The Pooltest 25 Bluetooth provides simple, accurate and reliable analysis of key pool, spa and other aquatic samples. Selecting the required parameter and performing the test are supported through on-screen prompts and comprehensive test instructions.

The principle of photometric testing is based on the absorption or scattering of a measured intensity of incident light compared to the light intensity reaching the detector array. The light intensity is determined as Transmittance (%T) or Absorbance (A) and compared to calibration tables stored within the Pooltest 25 Bluetooth. The stored calibration tables convert %T or A to results in a variety of units (mg/l, ppm etc.) as defined in Section 6.6. Calibration tables are defined by Palintest based on the measurement of reference standards using Palintest reagents. To achieve the best quality results there are a small number of care points:

- 1 Always use the provided light cap to prevent ambient light affecting the results.
- 2 Ensure Sample and Blank cuvettes are clean, dry and inserted correctly into the sample chamber, using the allocated orientation mark to align.
- 3 Always blank the instrument with untreated sample prior to analysis.

Additional guidance is provided in **Appendix 1 Photometric Testing Hints and Tips**

6.1 Selecting Test Parameters

The Pooltest 25 Bluetooth offers a number of choices to select the parameter to test:

Test Number Entry - use the numeric keypad to enter the unique Test Number to directly access any programmed calibration.

Direct Entry - use the numeric keypad to directly access the 10 most common tests with a single key push.

Choose a Test - the full list of test parameters is available by selecting Choose a Test and scrolling using the up/down keys. When the desired parameter is highlighted, press the OK key to access the method. Tests are presented in Test Number order. When the required test is selected the Pooltest 25 Bluetooth automatically selects the correct wavelength

and sets additional method parameters as required. Test method protocols are defined in detail section 8, including the reagents and accessories that may be required.

When a test is selected, the Pooltest 25 Bluetooth will display a number of screens and options to guide the user through the testing process, as described in the following pages.

6.2 Dilution Factor

If selected in the System menu, the initial screen will request the defined Dilution Factor to apply to results.



If Dilution Factor is not active this screen will not be shown.

Results shown on the final screen have automatically been corrected for dilution prior to display. Corrected results will also be stored in the log.

Note: if the System Lock is applied the Dilution Factor functionality cannot be switched on or off from the current status until the system is unlocked.

6.3 Blanking the Pooltest 25 Bluetooth

Blanking the photometer is a key first step in photometric analysis, effectively removing the potential entrained sample colour and minor amounts of turbidity from calculation of analytical results.

To blank the photometer, prepare a Blank cuvette using untreated sample i.e. sample that has not been reacted with any reagents. If the sample is to be diluted or physically treated (filtered for example) before analysis, use the same dilution/treatment for the Blank cuvette.

When accessing the test method the Pooltest 25 Bluetooth will request the user to Insert Blank.



Insert the Blank cuvette and press OK.



The Pooltest 25 Bluetooth will determine the absorbance due to the sample colour at all wavelengths simultaneously and store in temporary memory for use in analysis.

Upon successful blanking the Pooltest 25 Bluetooth will automatically move to the Insert sample stage of the analytical method.

If the sample is too highly coloured to support effective blanking and subsequent analysis the error message "Error 9 is caused by the blank cuvette being too dark. Check the correct cuvette is being used".



Ensure the blank cuvette is being used, not the sample plus reagent cuvette. Sample colour can be reduced by dilution with clean water; the dilution selected should take account of the expected concentration of parameter under test. Blank results are stored in the temporary memory of the Pooltest 25 Bluetooth and will be used for all subsequent tests until:

- The instrument is powered down (temporary memory is lost/deleted)
- A new Blank reading is taken - this option is available on accessing any subsequent test at the base of the screen. Repeat the blanking process if the sample changes significantly or a new sample is under test
- Some tests use a reversed blanking process where a coloured blank cuvette may be required. When changing between standard tests and 'reverse blank' test, a new blank will be requested by the Pooltest 25 Bluetooth.

If the blank value generated in this step is not detectable an error message will be displayed "Error 7 is caused by too much ambient light. Try using the light cover provided with the instrument".



See Appendix 1 Photometric Testing Hints and Tips for more advice regarding effective blanking.

6.4 Reading Results with the Pooltest 25 Bluetooth

Assuming a suitable blank has been recorded, the next step of the photometric analysis process is to carry out the reading step.

Prepare a Sample cuvette following the method instructions provided in Chapter 8.

Select **Read** at the base of the screen and press **OK**.

At the **Insert sample** prompt, insert the sample cuvette ensuring it is clean and dry and oriented correctly using the location mark.



Press **OK** to begin the measurement process. The screen will display **Reading...**



At the completion of the measurement process the result is displayed on screen.



6.5 Timer

Many photometric methods require a reaction time to develop, the recommended time period being documented in the Palintest Phot Book and included as part of the method parameters programmed into the Pooltest 25 Bluetooth.

Tests requiring a reaction time will have the option to select an automatic timer to count down the reaction time required. While in the Insert sample screen use the right key to move the cursor to highlight **Timer**.



The programmed reaction time will be displayed. Press **OK** to **Start** the countdown.

Three options will be displayed:

- Stop** cancel the countdown timer
- Exit** exits the countdown screen and returns to the Insert sample screen. The countdown will continue and the current time can be seen by selecting **Timer**. At the end of the countdown an audible alarm will sound to indicate the sample is ready to read. Select **OK** to read the sample manually.
- Exit and Read** exits the countdown screen and automatically reads the sample at the completion of the allocated time period.

6.6 Changing Result Units of Expression

Many chemical species have a number of alternative units that can be used for reporting results e.g. Phosphate can be expressed as PO_4 or P for example.



Where alternative units of expression for results are available the ▲▼ symbols will be displayed next to the current result units. Use the up/down arrows to change the units of expression as required. Values are modified automatically.

Results stored in the log will be in the units selected on screen, changing the chemical species will add an entry to the log showing the updated result and species parameter selected.

6.7 Follow-on Tests

A number of photometric methods have additional optional methods that can be applied, known as Follow-on Tests e.g. Phot 008 Total Chlorine follows

Phot 007 Free Chlorine. Follow-on methods are usually either based on further reagent addition to the sample just measured for sequential parameters or used to correct for potential/known interferences. Follow-on tests are clearly defined in the Section 8 and, if available, are accessed via the **Follow-on** option located at the right hand side of the options.



To access the Follow-on test, highlight Follow-on and press OK. The next method is automatically loaded and operated in the usual manner.

NOTE: if no viable result is produced during the first stage of a sequential test method, the Follow-on option will be automatically removed.

7.0 Test Methods

The Pooltest 25 Bluetooth provides simple test protocols for the key parameters required to effectively control swimming pools, hydrotherapy pools, spas and hot tubs.

The tests available by number are as follows:

Test No.	Test Name	Notes
0	Transmittance	Select wavelength manually using up/down arrows
1	Chlorine-Free	Select range from the System Mode
2	Chlorine-Total	Select range from the System Mode
3	Bromine-Total	
4	Ozone	
5	PHMB	
6	pH-Phenol Red	
7	Total Alkalinity	
8	Calcium Hardness	
9	Cyanuric Acid	
10	Iron/1	
11	Copper Free/5	
12	Copper-Total/5	Available directly, also as a Follow-On Test from Test 11
13	Salt/10,000	
14	Sulphate	
15	Chloride	
16	Total Hardness	
17	Aluminium	
18	Nitrate	
19	Ammonium	
20	Phosphate/4	
21	Manganese HR	
22	Chlorine/250	
23	Hydro. Perox./100	
31	Chlorine-Free/5	
32	Monochloramine	Available as a Follow-On Test from Test 31 only
33	Dichloramine	Available as a Follow-On Test from Test 32 only
34	Calc. Hard. Salt	Use when testing Calcium Hardness in a salt pool
35	Urea	Use specifically in China only
77	Water Balance	Choose Palintest or Langelier from the System Mode

Test 1 Chlorine-Free/5 or Chlorine-Free/10

Standard Range: 0-5.00mg/l (ppm) Cl₂ (use DPD 1)

Extended Range: 0-10.0mg/l (ppm) Cl₂ (use DPD XF)

Colour change: Colourless - Purple/Red

- 1 Rinse test cuvette with sample leaving two or three drops in the tube.
- 2 Add one DPD 1 or DPD XF tablet, crush tablet and then fill the test tube with sample to the 10ml mark. Mix to dissolve tablet fully and ensure no particles remain.
- 3 Take photometer reading immediately. The result may drift on standing.
- 4 Retain test solution if the Total Chlorine Follow-On Test is required.

Test 2 Chlorine-Total/5 or Chlorine-Total/10

Standard Range: 0-5.00mg/l (ppm) Cl₂ (use DPD 3)

Extended Range: 0-10.0mg/l (ppm) Cl₂ (use DPD XT)

Colour change: Purple/Red from Test 1 increases in intensity

Carry out this test on the solution remaining from the Free-Chlorine/5 test.

- 1 If any **shock treatment chemicals** have been added to the pool, **add one DPD Oxystop** tablet, crush and mix to dissolve. **Stand for one minute** before proceeding. This will prevent a false response caused by the shock treatment chemicals.
- 2 Add **one DPD 3 or DPD XT** tablet, crush and mix to dissolve.
- 3 **Stand for two minutes** to allow full colour development.
- 4 Take photometer reading after two minutes have elapsed.

Note: To obtain **Combined Chlorine** residual subtract Free Chlorine result from Total Chlorine result:

Combined Chlorine = Total Chlorine - Free Chlorine

Test 3 Bromine**Range:** 0-10.0mg/l (ppm) Br₂**Colour change:** Colourless - Purple/Red

- 1 Rinse test cuvette with sample leaving two to three drops in the tube.
- 2 Add one DPD 1 tablet, crush tablet and then fill with sample to the 10ml mark. Mix to dissolve tablet fully and ensure no particles remain.
- 3 Take photometer reading immediately. Result may drift on standing.

Test 4 Ozone**Range:** 0-2.00mg/l (ppm) O₃**Colour change:** Colourless - Purple/Red

- 1 Rinse test cuvette with sample leaving two to three drops in the tube.
- 2 Add one DPD 4 tablet, crush tablet and then fill with sample to the 10ml mark. Mix to dissolve tablet fully and ensure no particles remain.
- 3 Take photometer reading immediately. Result may drift on standing.

Note: The ozone test also responds to chlorine and bromine. Pools using 'ozone with chlorine' treatment systems, or other combined treatments will produce a result at this stage representing the ozone plus other treatment chemicals. To determine ozone specifically requires an additional protocol as follows:

Correction for Chlorine or Bromine

- 1 Fill a test cuvette with sample to the 10ml mark. Add one DPD Glycine tablet, crush and mix to dissolve.
- 2 Take a second clean test tube and add two to three drops of solution from the first tube. Add one DPD 4 tablet, crush and then make up to the 10ml mark with the solution from Step 1. Mix to dissolve tablet fully.
- 3 Take Photometer reading immediately. The DPD Glycine complexes ozone in the sample and the result displayed equates to chlorine or bromine present in the sample only.
- 4 Subtract the result obtained in Step 3 from the initial result to determine the ozone concentration specifically.

Test 5 PHMB (Polybiguanide Based Biocides)**Range:** 0-100mg/l (ppm) as biocide**Colour change:** Yellow - Green - Blue

PHMB is the generic name for various polybiguanide-based swimming pool biocide treatment chemicals. These biocides are normally sold under branded names such as Baquacil* (Lonza), Softswim* (Biolab), Revacil* (Mareva) and Nicosil* (NICO Norge).

Commercial products normally contain 20% active PHMB. This test has been calibrated for the management of pools using commercial products of this defined strength. A factor will need to be applied if products of a different strength are being used. (*All trademarks acknowledged).

- 1 Fill test cuvette with sample to the 10ml mark.
- 2 Add one PHMB tablet, crush and mix to dissolve completely.
- 3 Take photometer reading immediately.

Test 6 pH-Phenol Red**Range:** pH 6.5-8.5**Colour change:** Yellow - Red

- 1 Fill test cuvette with sample to the 10ml mark.
- 2 Add one Phenol Red tablet, crush and mix to dissolve completely.
- 3 Take photometer reading.

Test 7 Total Alkalinity**Range:** 0-500mg/l (ppm) CaCO₃**Colour change:** Yellow - Green - Blue

- 1 Fill test cuvette with sample to the 10ml mark.
- 2 Add one Alkaphot™ tablet, crush thoroughly and mix. Ensure all particles have dissolved completely.
- 3 Allow to **stand for one minute**.
- 4 Take photometer reading.

Note: If a thin yellow layer is observed at the bottom of the tube, the cuvette should be thoroughly remixed before measurement.

Test 8 Calcium Hardness**Range:** 0-500mg/l (ppm) CaCO₃**Colour change:** Violet - Orange

- 1 Fill test cuvette with sample to the 10ml mark.
- 2 Add one **Calcicol No 1** tablet, crush and mix to dissolve.
- 3 Add one **Calcicol No 2** tablet, crush and mix to dissolve.
- 4 **Stand for two minutes.**
- 5 Take photometer reading.

Note: this method is calibrated for standard pools. For saltwater/seawater pools, please use Test 34 Calc.Hard.Salt.

Test 9 Cyanuric Acid**Range:** 0-200mg/l (ppm) CNA**Colour change:** Clear - Cloudy
(turbidimetric method)

Note: Cyanuric acid is also commonly referred to as 'Chlorine Stabiliser' or 'Pool Conditioner'.

- 1 Fill test cuvette with sample to the 10ml mark.
- 2 Add **one Cyanuric Acid** tablet. **DO NOT CRUSH. Allow to disintegrate for at least two minutes.** A cloudy solution indicates the presence of cyanuric acid.
- 3 Crush any remaining undissolved tablet, mix fully and take photometer reading.

Test 10 Iron/1**Range:** 0-1.00mg/l (ppm) Fe**Colour change:** Colourless - Pink

- 1 Fill test cuvette with sample to the 10ml mark.
- 2 Add **one Iron LR tablet**, crush and mix to dissolve.
- 3 **Stand for one minute.**
- 4 Take photometer reading.

Test 11 Copper-Free/5**Range:** 0-5.00mg/l (ppm) Cu**Colour change:** Colourless - Purple

- 1 Fill test cuvette with sample to the 10ml mark.
- 2 Add **one Coppercol No 1 tablet**, crush and mix to dissolve.
- 3 Take photometer reading.

Test 12 Copper-Total/5**Range:** 0-5.00mg/l (ppm) Cu**Colour change:** Colourless - Purple

- 1 Fill test cuvette with sample to the 10ml mark.
- 2 Add one Coppercol No 1 tablet and one Coppercol No 2 tablet, crush and mix to dissolve.
- 3 Take photometer reading.

Note: The Copper-Total/5 is also available as a Follow-On Test from Test 11 Copper-Free/5

Test 13 Salt/10,000**Range:** 0-10,000mg/l (ppm) NaCl**Colour change:** Clear - Cloudy
(turbidimetric method)

- 1 Take a clean dilution tube (PT 512). Using the Measuring Syringe (PT 361) add 0.5ml of pool water. Fill to the 100ml mark with deionised water, cap and mix.
- 2 Fill test tube to the 10ml mark with diluted solution.
- 3 Add **one Acidifying CD** tablet, crush and mix to dissolve.
- 4 Add **one Chloridol** tablet, and **allow to disintegrate for at least two minutes.** A cloudy solution indicates the presence of salt.
- 5 Crush any remaining undissolved tablet, mix and take photometer reading.

Test 14 Sulphate**Range:** 0-200mg/l (ppm) SO₄**Colour change:** Clear - Cloudy
(turbidimetric method)

- 1 Fill test tube with sample to the 10ml mark.
- 2 Add **one Sulphate** tablet, crush and mix to dissolve. A cloudy solution indicates the presence of sulphate.
- 3 **Stand for five minutes** then mix again.
- 4 Take photometer reading.

Test 15 Chloride**Range:** 0-500mg/l (ppm) NaCl**Colour change:** Clear - Cloudy
(turbidimetric method)

- 1 Take a clean test cuvette. Using the Measuring Syringe (PT 361) add 1ml of pool water. Fill test tube to the 10ml mark with deionised water.
 - 2 Add one **Acidifying CD** tablet, crush and mix to dissolve.
 - 3 Add **one Chloridol** tablet and allow to **disintegrate for at least two minutes**. A cloudy solution indicates the presence of chloride.
 - 4 Crush any remaining undissolved tablet, mix and then take photometer reading.
-

Test 16 Total Hardness**Range:** 0-500mg/l (ppm) CaCO₃**Colour change:** Pale Purple - Purple

- 1 Fill test tube with sample to the 10ml mark.
 - 2 Add **one Hardicol No 1** tablet, crush and mix to dissolve.
 - 3 Add **one Hardicol No 2** tablet, crush and mix. Ensure all particles are dissolved.
 - 4 **Stand for two minutes.**
 - 5 Take photometer reading.
-

Test 17 Aluminium**Range:** 0-0.50mg/l (ppm) Al**Colour change:** Yellow - Pink

- 1 Fill test cuvette with sample to the 10ml mark.
- 2 Add **one Aluminium No 1** tablet, crush and mix to dissolve.
- 3 Add **one Aluminium No 2** tablet, crush and mix fully to dissolve.
- 4 **Stand for five minutes.**
- 5 Take photometer reading.

Test 18 Nitrate**Range:** 0-100mg/l (ppm) NO₃**Colour change:** Colourless - Red

- 1 Take a clean Nitratest Tube (PT 526). Using the Measuring Syringe (PT 361) add 1ml of sample. Fill the Nitratest Tube to the 20ml mark with deionised water.
- 2 Add one level spoonful of Nitratest Powder and one Nitratest tablet. Do not crush the tablet. Replace screw cap and shake tube well for exactly **one minute** then allow contents to settle.
- 3 Then, either:

Invert tube gently 2 or 3 times and then allow to stand for at least **two minutes** to ensure complete settlement. Remove screw cap and wipe around top with a clean tissue. Decant clear solution into test cuvette, filling to the 10ml mark.

or

Using the Palintest Filtration Set (PT 600) filter a portion of the solution through a GF/B filter paper into a test cuvette filling to the 10ml mark.

- 4 Add **one Nitricol** tablet, crush and mix to dissolve.
 - 5 **Stand for 10 minutes.**
 - 6 Take photometer reading.
-

Test 19 Ammonium**Range:** 0-1.00mg/l (ppm) N**Colour change:** Yellow - Green

- 1 Fill test cuvette with sample to the 10ml mark.
- 2 Add **one Ammonia No 1** tablet and one **Ammonia No 2** tablet, crush and mix to dissolve.
- 3 **Stand for 10 minutes.**
- 4 Take photometer reading.

Test 20 Phosphate/4**Range:** 0-4.00mg/l (ppm) PO₄**Colour change:** Colourless - Blue

- 1 Fill test cuvette with sample to the 10ml mark.
- 2 Add **one Phosphate No 1** tablet, crush and mix to dissolve.
- 3 Add **one Phosphate No 2** tablet, crush and mix to dissolve.
- 4 **Stand for 10 minutes.**
- 5 Take photometer reading.

Test 21 Manganese HR**Range:** 0-5.0mg/l (ppm) Mn**Colour change:** Colourless - Orange

- 1 Fill test cuvette with sample to the 10ml mark.
- 2 Add **one Manganese HR No 1** tablet, crush and mix to dissolve.
- 3 Add **one Manganese HR No 2** tablet, crush and mix to dissolve.
- 4 **Stand for exactly 5 minutes.**
- 5 Take photometer reading.

Test 22 Chlorine/250**Range:** 0-250mg/l (ppm) Cl₂**Colour change:** Colourless - Brown

- 1 Fill test cuvette with sample to the 10ml mark.
- 2 Add **one Acidifying GP** tablet and **one Chlorine HR** tablet, crush and mix to dissolve. Allow any undissolved particles to settle.
- 3 Take photometer reading.

Test 23 Hydrogen Peroxide/100**Range:** 0-100mg/l (ppm) H₂O₂**Colour change:** Colourless - Brown

- 1 Fill test cuvette with sample to the 10ml mark.
- 2 Add **one Acidifying PT** tablet and **one Hydrogen Peroxide HR** tablet, crush and mix to dissolve.
- 3 Take photometer reading.

Note: use this test for checking hydrogen peroxide levels in pools treated with PHMB.**Test 31/32/33 Chlorine-Free/5, Monochloramine and Dichloramine****Range:** 0-5.00mg/l (ppm) Cl₂**Colour change:** Colourless - purple/red (Free Chlorine), increasing intensity with Follow-On tests.

- 1 Rinse test cuvette with sample leaving a few drops in the tube.
- 2 Add **one DPD 1** tablet, crush tablet and then fill the test tube with sample to the 10ml mark. Mix to dissolve tablet fully and ensure no particles remain.
- 3 **Take photometer reading immediately.** The result may drift on standing.
- 4 Retain test solution and select 'Follow-On' for the Test 32 Dichloramine.
- 5 Add **one DPD 2** tablet, crush and mix to dissolve.
- 6 **Take the photometer reading immediately.** The result displayed is the monochloramine concentration as mg/l (ppm) Cl₂.
- 7 Retain the test solution and select 'Follow-On' for the Test 33 Dichloramine.
- 8 Add **one DPD 3** tablet, crush and mix to dissolve. **Stand for two minutes** to allow full colour development.
- 9 Take the photometer reading. The photometer displays the dichloramine concentration as mg/l (ppm) Cl₂.

Test 34 Calcium Hardness (Saltwater Pool Calibration)**Range:** 0-500mg/l (ppm)**Colour change:** Violet - Orange

- 1 Fill test cuvette with sample to the 10ml mark.
- 2 Add **one Calcico No 1** tablet, crush and mix to dissolve.
- 3 Add **one Calcico No 2** tablet, crush and mix to dissolve.
- 4 **Stand for two minutes.**
- 5 Take photometer reading.

Test 77 Water Balance

To determine Water Balance Index, select either Palintest or Langelier from the System Mode prior to commencing.

In both Palintest and Langelier test methods, three parameters are measured using the Pooltest 25 Bluetooth in a defined sequence with the result for Water Balance displayed at the test conclusion.

Alkalinity (Alkaphot), Calcium Hardness (Calcicol) and pH (Phenol Red) tests are required. Prepare the test solutions as described in the individual parameter test methods and proceed as follows:

Palintest Water Balance

- 1 Select Test 77 by pressing the Alkalinity key (no. 7) twice or from the 'Choose a Test' list.
- 2 Carry out the Alkalinity test then select 'Follow-On' from the results screen.
- 3 Carry out the Calcium Hardness test then select 'Follow-On' from the results screen.
- 4 Carry out the pH test then select 'Follow-on' from the results screen.
- 5 The Water Balance Index is calculated and is displayed. See the table below for more details of the results guidance

Water Balance Guidance

LANGELIER		PALINTEST		Recommendation
Index	Water Balance Condition	Condition	Water Balance Condition	
<-1.5	Corrosive	<9.6	Highly Corrosive	Increase pH to 7.5 - 7.8. Increase Calcium Hardness to at least 50mg/l. Increase Total Alkalinity to 100mg/l or higher as necessary. Retest Water Balance.
-0.6 to -1.5	Corrosive	9.6 to 10.5	Corrosive	
-0.1 to -0.5	Corrosive	10.6 to 10.9	Acceptable Balance	Retest water regularly.
0.0	Ideal Balance	11.0 to 11.2	Ideal Balance	No action required.
0.1 to 0.5	Scale Forming	11.3 to 11.6	Acceptable Balance	Retest water regularly.
0.6 to 1.5	Scale Forming	11.7 to 12.6	Scale Forming	Decrease pH to 7.2 - 7.5. Decrease Total Alkalinity to 150mg/l or lower as necessary. Retest Water Balance.
>1.6	Scale Forming	>12.7	Highly Scale Forming	

Note: Always keep the pH, Total Alkalinity and Calcium Hardness levels within the limits recommended in pool operating instructions and chemical suppliers' recommendations. Seek specialist advice if corrosion or scale formation is still apparent even though the water is shown to be in a balanced condition.

Note: the Palintest Water Balance test has been calculated for an average heated swimming pool (82°F, 28°C). For unheated swimming pools, subtract 0.1 from the index value obtained. For higher temperature pools and spas, add 0.1 to the index value obtained.

Langelier Saturation Index Water Balance

To complete the Langelier method, a separate Total Dissolved Solids (TDS) meter is required to provide TDS and temperature values which are entered manually.

Prepare the test solutions and proceed as follows:

- 1 Select Test 77 by pressing the Alkalinity key (no. 7) twice or from the 'Choose a Test' list.
- 2 Carry out the Alkalinity test then select 'Follow-On' from the results screen.
- 3 Carry out the Calcium Hardness test then select 'Follow-On' from the results screen.
- 4 Carry out the pH test then select 'Follow-on' from the results screen.
- 5 Manually enter the TDS reading (in mg/l or ppm) taken using the numerical keys. Select 'OK' when the figure on screen is correct.
- 6 Manually enter the temperature using the numerical keys and select 'OK'.
- 7 The Langelier Saturation Index is calculated and is displayed.

8.0 Calibration/Validation

Your Pooltest 25 Bluetooth is delivered with a calibration certificate validating the performance of the instrument as it leaves Palintest.

We recommend annual service and calibration of all photometric instruments in normal use.

The Pooltest 25 Bluetooth also includes an automatic routine to validate analytical performance using certified Palintest Check Standards. Accessed via the Mode menu, the **Check Standard Mode** provides a field method of ensuring your instrument is operating within defined specifications and also a troubleshooting method for unexpected results.

Every Palintest Check Standards set is supplied with certified values expressed as %T (Transmission), derived from traceable reference materials. Acceptable tolerances are defined on the certificate and are automatically specified within the Pooltest 25 Bluetooth.

8.1 Check Standard Mode

Access Check Standard Mode from the Mode screen. Highlight Check Standard Mode and press OK.



Two choices are offered:

Enter Check Standard Values use the up/down keys to adjust the displayed values to match the certificate

Check Standard Measurement insert the Check Standards in the defined order to generate a validation report

8.2 Enter Check Standard Values

Each standard has two values assigned, for two individual wavelengths.



Use the up/down keys to adjust the values to match the certificate, following the order defined on the display. Press OK when the correct value is shown and the prompt will forward to the next value.

Upon completion the message **Check Standard Values assigned successfully** will be displayed. Press **OK** to return to the Check Standard Mode menu.

8.3 Check Standard Measurement

Follow the on-screen prompts to insert the Check Standards in the defined order. The Pooltest 25 Bluetooth will automatically measure the Transmittance at the required wavelength.

Upon completion of the sequence the results are displayed on screen with pass or fail status.



If the Check Standard Mode reports a failure, see Appendix 2 Troubleshooting for guidance or contact your local Palintest supplier.

Photometric analysis is a very powerful technique, providing accurate analysis of a wide range of critical swimming pool, spa, hydrotherapy and hot tub parameters.

A complete guide to the science behind photometric (also known as colorimetric) analysis can be found in the Know portal at www.palintest.com/know/

Palintest has focused on simplifying the test methods and equipment used for this technique but there are still a number of ways to ensure the results you generate are as accurate as possible:

- 1 Always use genuine Palintest reagents when using the programmed test methods. Each parameter has a unique calibration which has been generated using Palintest reagents. Alternative reagents may follow the same general methodology but can differ substantially in formulation and colour generated thereby rendering the calibration and results inaccurate.
- 2 Always correct for the blank value - any inherent colour in the sample (which may not be visible to the naked eye) will offset the result if the blank step is omitted. If the sample colour is too intense for the photometer to blank use dilution with deionised water to reduce the intensity. Remember to dilute the sample to the same extent for analysis.
- 3 Always respect the reaction time specified within the instructions. Some methods produce instant colour whereas others require a reaction time to reach full development. Taking a reading before the reaction time has elapsed may lead to low results.
- 4 The presence of solids, either large or in the form of turbidity, can adversely affect the quality of results by preventing incident light from reaching the detector. The blanking step can reduce the impact of turbidity interference but large solid particles must be removed prior to analysis. Solids can be removed by filtration prior to analysis or, if the solids are settleable and will not lie in the optical path, allowing them to settle in the photometer cuvette can be acceptable.
- 5 Calibration curves relate transmission/absorbance to concentration to provide result data but not all calibration ranges are linear. Frequently at higher concentrations the curve 'flattens' leading to higher potential variability in results. If greater accuracy is required than can be achieved on neat samples then dilution can be used to improve performance.
- 6 Ensure the photometer cuvette is clean, has no droplets on the outside and is not excessively scratched. Good technique is to wipe the outside surface of the cuvette prior to inserting into the optical chamber to prevent contamination of the optical system.
- 7 Always use good quality, genuine Palintest cuvettes. Use the orientation mark to ensure repeatable positioning of the cuvette.
- 8 Maintain the cleanliness of the optical chamber by only inserting clean cuvettes. If the chamber becomes fouled or sample is spilled the base can be removed for cleaning access. Clean the optical chamber with a soft cloth. Do not use abrasive chemicals or scouring agents.
- 9 Always use the light cap provided to prevent ambient light affecting results. This is especially relevant when operating in strong sunlight or other light conditions.
- 10 Ensure your Pooltest 25 Bluetooth is operating effectively by using Palintest Check Standards and the Check Standard Mode (see Section 9 Calibration/Validation) and having the photometer serviced and calibrated at regular intervals. Calibration is recommended at 12 month intervals for normal usage and can be provided by your local Palintest distributor.

The Pooltest 25 Bluetooth features self-diagnostic software and hardware to optimise performance and battery life. The Info panel indicates the status of the Pooltest 25 Bluetooth and any specific fault conditions are defined and displayed on screen.

Optical Errors

I have an Error 9 message

Error 9 is caused by the blank cuvette being too dark to allow the blanking step to be carried out. Check that the correct cuvette is being used i.e. ensure the sample cuvette is not being used for blanking. If the sample is too highly coloured or contains significant solids, dilute and repeat the blanking step. If the problem persists and the blank cuvette is not the issue, clean the optical chamber by removing the access cover and cleaning with a soft cloth. Do not use corrosive or abrasive chemicals.

I have an Error 7 message

Error 7 is caused by too much ambient light reaching the detector. Use the light cover provided with the instrument.

Check Standard Issues

How do I maintain my Check Standards?

Check Standards are manufactured to precise values/tolerances, certified against traceable reference materials and provided in sealed cuvettes. Do not decant or remove the sealed cap from the Check Standard.

Ensure the Check Standard cuvettes are clean and dry using lint-free cloths before inserting into the optical chamber.

Insert the Check Standard aligning the orientation arrow towards the front of the optical chamber.

Values assigned to calibration standards are defined at 20-25°C. Extremely high or low ambient temperatures can affect Check Standard results so ensure standards are at the defined temperature to effectively validate.

Check Standards have a two year shelf-life, after which the colours will no longer be valid. Please dispose of the expired standards after this period according to the MSDS.

My Check Standard validation has failed

Photometers may fail the Check Standard validation step due to the requirement for service/calibration. Contact your local Palintest partner for service and support.

Ensure the Check Standards are inserted correctly, using the orientation mark to align and inserted fully. Use the light cap to prevent any ambient light interference.

Service/calibration is recommended at annual intervals in normal operation.

Bluetooth Issues

The Pooltest 25 Bluetooth features the latest Bluetooth SMART connectivity.

I can't connect the Pooltest 25 Bluetooth to my device

Ensure your device is Bluetooth SMART ready. Previous versions of Bluetooth (also known as Bluetooth Classic) will not connect to the Pooltest 25 Bluetooth. Check your device specification or visit www.bluetooth.com to see the latest list of SMART ready devices.

I can't download my results to my connected device

The Info Panel will show the connected status of the Pooltest 25 Bluetooth. Ensure the connected icon is displayed.

If more than one remote device is running the Aqua Pal app, check that the correct device is connected.

The connected device is indicated at the base of the Aqua Pal results screen.

I can't upload my data to the Palintest Portal

Ensure you have a reliable internet connection to exchange data with the Palintest Portal. Once uploaded data can be shared within your secure user group and downloaded for report generation.

Bluetooth Error Messages

The Pooltest 25 Bluetooth communicates seamlessly with the Palintest Aqua Pal app. In the event of any errors the Pooltest 25 Bluetooth will display either of the following messages:



The Pooltest 25 Bluetooth is not receiving a response from the Palintest Aqua Pal app but the remote device is connected. This will appear 10s after a result transmission has started and no valid response has been received.

Re-start the Aqua Pal app and select Retry.

When the Bluetooth connection to the remote device is lost the following message is shown:



Check the Bluetooth has not been inadvertently deactivated in the mobile device settings.

Note: the photometer will not appear as a 'paired device' in the settings of a Bluetooth SMART device.

Battery/Power Issues

My batteries are running out too quickly

Use good quality batteries and always replace the batteries completely when indicated on the Info Panel. The battery compartment is located underneath the Pooltest 25 Bluetooth and secured by four screws. Remove the battery cover and replace batteries as a set.

Refit the battery cover ensuring the cover is tight enough to prevent water ingress. Do not overtighten as this will damage the screw housings.

The Pooltest 25 Bluetooth has a number of power-saving features such as auto-dim of the backlight and automatic power down after inactivity (See Section 6). Activating these features will prevent power being used unnecessarily. Bluetooth can also be de-activated if not required.

Using the USB port to provide power will automatically prevent battery power being consumed when mains or external power is available.

My photometer will not switch on

The Info Panel provides an ongoing indication of power available from the battery supply. When the voltage falls below 3.0V the Pooltest 25 Bluetooth will not switch on as the available power will not be sufficient to provide effective photometric testing.

Use the USB cable to provide an alternative power supply. If the photometer still fails to switch on, contact your local Palintest partner for service support.

My USB power supply is not working

Ensure your PC is not operating in power save mode or the mains supply is not isolated.

Replace the cable with an alternative to ensure the cable is not faulty.

USB Connection Issues

I cannot download my data

Check the USB mode is set to Hard Disk, not COM port mode. In Hard Disk mode the data can be 'dragged and dropped' as with a conventional memory stick and is available in CSV format.

Opening CSV data files can be accomplished by a number of text editing or spreadsheet programs.

Where do I find the COM port drivers?

The latest drivers are available at www.palintest.com

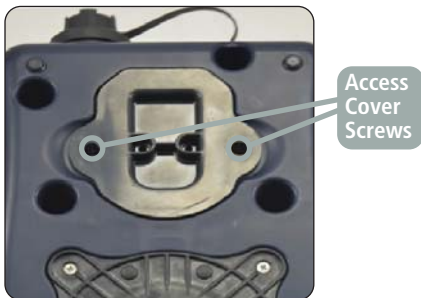
COM port drivers are provided for Windows operating systems (Windows Vista, XP and 7).

Care and Maintenance

The Pooltest 25 Bluetooth contains no user-serviceable parts internally. User maintenance is only recommended for cleaning of the optical chamber, changing batteries and validating performance using the Check Standard Mode.

Cleaning the Optical Chamber

The optical chamber has been designed to support removal and cleaning with a lint-free cloth as required by removal of the access cover.



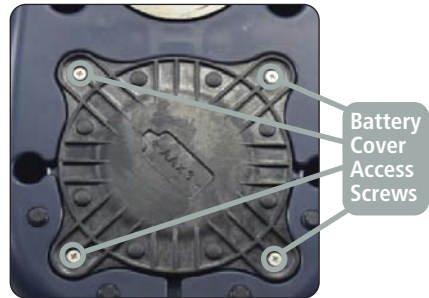
Do not use any of the following agents when cleaning this optical chamber:

- Abrasive cloths
- Corrosive chemicals
- Any organic solvents

Do not overtighten the screws on re-assembly to avoid damaging the access cover.

Replacing the Batteries

Remove the four retaining screws from the battery cover and gently prise the cover free.



Replace all batteries at the same time.

Ensure on replacing the battery cover that the gasket is correctly located to prevent any water ingress. Tighten the screws carefully but do not overtighten.

Pooltest 25 Bluetooth

Instrument Type	Dual light source photometer offering direct-reading of pre-programmed test calibrations and Transmittance
Optical System	
Optical Source	Dual LED sources with optical filters
Optical Detectors	Silicon photodiodes
Peak Wavelengths	450nm, 500nm, 550nm, 570nm, 600nm, 650nm
Wavelength Selection	Automatic
Bandwidth	±5nm
Range	1 - 100%T
Accuracy	± 1.0% T
User Interface	
Display	320 x 240 pixel LCD with contrast adjustment
Backlight	Timed, on key press with auto-dim and off
User Interface	On-screen prompts available in English, French, Spanish, German, Italian, Turkish and Mandarin (Chinese).
Keypad	Numeric keypad with assignable Hotkeys. Four navigation keys and OK key
Physical	
Size (W x L x H)	150 x 250 x 70mm
Weight	975g
IP Rating	IP67
Power Supply	
Batteries	3 x 1.5v 'AA' batteries
Lifetime	40 hours (typical use, backlight off, 'AA' alkaline cells)
Mains	5V DC, 900mA delivered via USB port
Power Management	Auto-switch off (user selectable between 5-15 minutes on battery) or continuous operation
Power Saving	User control for Backlight and Bluetooth to minimise battery consumption
Test Methods	
Tests Available	Pre-programmed for Palintest tablet reagent and liquid reagent tests. Also operates in Transmittance mode
Test Selection	Test number entry or direct access from assigned keys
Test Cuvettes	12-20mm OD with automatic cuvette centering
Result Units	g/l, mg/l, ppm, mmol/l, µmol/l, µg/l
Blanking	Automatic blanking at all wavelengths. Blank value stored in memory until power off or new blank recorded
Connectivity	
USB	USB Type B Connector. Waterproof connector available
Wireless	Palintest Bluetooth SMART profile
Data Management	
Instrument Memory	Non-volatile storage
Memory Capacity	Up to 1000 data sets. Each data set includes date, time, Sample ID, Operator ID, method number, method name, result, units
Sample IDs	Up to 24 at any time
Operator IDs	Up to 12 at any time
Data Download	To computer via USB using Hard Disk or COM port mode. Wireless Bluetooth SMART download, either instantly or as a data batch, using a connected device running the Palintest Aqua Pal app. Optional Palintest Portal data management available
Data Output Format	Plain text
Software Upload	Software update by 'drag and drop' in USB Hard Disk Mode

Reagents

Name	Starter Pack (50 tests)	Replacement Pack (250 tests)
Total Alkalinity (Alkaphot®)	PM 188	AP 188
Aluminium	PM 166	AP 166
Ammonia	PM 152	AP 152
Bromine	PM 060	AP 060
Calcium Hardness (Calcolic™)	PM 252	AP 252
Chloride/Salt (Chloridol™)	PM 268	AP 268
Chlorine - Free (DPD 1)	PM 011	AP 011
Chlorine - Free, extended range (DPD XF)	PM 013	AP 013
Chlorine - Free, Combined and Total (DPD 1 and DPD 3)	PM 031	AP 031
Chlorine - Free, Combined and Total, extended range (DPD XF and DPD XT)	PM 033	AP 033
Chlorine - Total (DPD 4)	PM 041	AP 041
Chlorine - Total (DPD 3 only)	-	AP 031/1
Chlorine - Total, extended range (DPD XT only)	-	AP 033/1
Chlorine HR	PM 162	AP 162
Copper - Free, Combined and Total (Coppercol®)	PM 186	AP 186
Copper - Free	-	AP 187
Cyanuric Acid	PM 087	AP 087
Hardness - Total (Hardicol®)	PM 254	AP 254
Hydrogen Peroxide HR	PM 105	AP 105
Iron LR	-	AP 155
Manganese HR	PM 174	AP 174
Nitrate (Nitratetest™)	PM 163	AP 163 (200 tests)
Ozone (DPD method)	PM 056	AP 156
pH - Phenol Red	PM 130	AP 130
PHMB	PM 272	AP 272
Phosphate LR	PM 177	AP 177 (200 tests)
Sulphate	PM 154	AP 154

Accessory Reagents

DPD Glycine, 250 pack	AT 056
EDTA Tablets, 250 pack	AT 090
DPD Oxystop, 250 pack	AP 017

Check Standards/Service for Pooltest 25 Bluetooth

PT 804 Pooltest 25 Bluetooth Check Standards	Validation standards for Pooltest 25 Bluetooth® with certificate. Supplied in hard transport/storage case
06247	Pooltest 25 Professional Series Service and Calibration

Cuvettes and Racks

PT 595/5 Photometer Cuvettes	Pack of 5 glass cuvettes with caps. 20mm OD, 77mm tall with 10ml graduation. For Pooltest 25 Bluetooth® and Pooltest 9 Bluetooth®
PT 501 Cuvette Rack	Rack for PT 595. Holds 8 cuvettes
PT 502 Crush/Stirring Rods	Pack of 10 crush/stirring rods
PT 663 Cuvette Brush	For cleaning cuvettes, length 120mm
PT 500 De-ion Pack	

What is the Aqua Pal App?

Generating reliable and accurate water test data is only part of the process of managing swimming pools, spas, hydrotherapy pools and hot tubs.

Collating the data quickly and sharing with other members of the team can be the difference between effective control and failing to adhere to local regulatory standards.



The Palintest Aqua Pal app is intrinsic in the process of storing, sharing and managing data produced by the Pooltest 25 Bluetooth and also allows for additional data to be added manually for the Big Data experience.

The Aqua Pal app is available for both iOS and Android (version 4.3 or later) devices that are equipped with Bluetooth SMART connectivity.

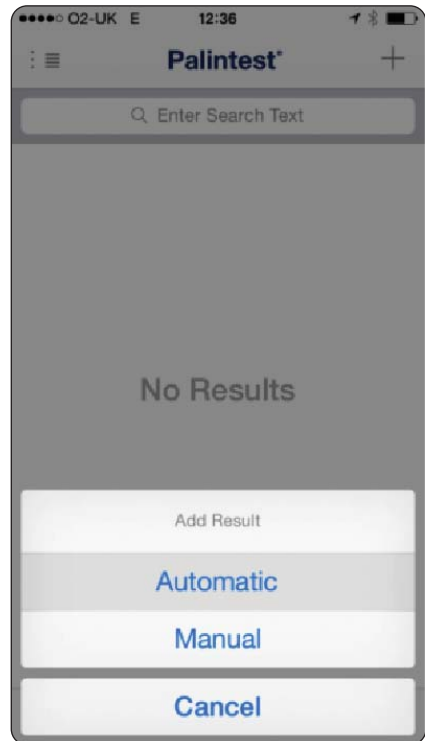
On first use the Aqua Pal app will require a registration step for both the app and the secure Palintest Portal. An internet connection is required to process the request as it will involve a second stage authentication via the provided email address.

Once the sign up process is completed the Aqua Pal app and Palintest Portal are ready to go.

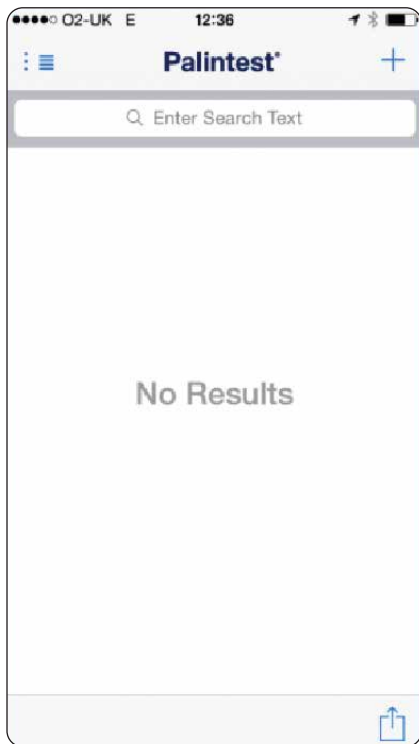
Connecting to the Aqua Pal App

Enable Bluetooth on the Pooltest 25 Bluetooth. The icon will appear on the Info Panel showing Bluetooth is on but not connected.

Open the Aqua Pal app and log in using your registration credentials. Choose whether to use automatic or manual result addition.



To connect the Pooltest 25 Bluetooth press the '+' symbol in the top right hand corner of the device screen. This will produce the list of all locally advertising Bluetooth SMART devices.



Select the Pooltest 25 Bluetooth you wish to connect (see also Section 6.4 Bluetooth Device ID - Adding Device Name) and Aqua Pal will link. The Info Panel will display the connected Bluetooth icon.

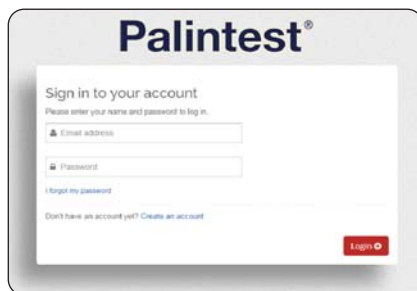
Previously connected instruments are stored in the app for future selection.

Once connected, data can either be uploaded automatically (if selected) or direct from the log (all or a selected group).

Manual data entry is also possible for results generated with non-Bluetooth instruments or external devices such as TDS meters, flow meters or level sensors.

Connecting with the Palintest Portal

Also included with the Aqua Pal app is the secure Palintest Portal found at <https://palintestportal.com>



Data stored in the Aqua Pal app can be uploaded to the Palintest Portal when an internet connection is available.

Data stored within the portal can be shared with team members using the User Group functionality. Simply assign team members to the User Group and they can view data generated by logging in to the portal.

Results stored within the portal can be filtered by date, sample ID, Operator ID and parameter.

Data can be viewed graphically over time with the status (in spec, nearing limit, out of spec) being indicated by a simple colour key.

Further Information

The full guide to the Aqua Pal app and the Palintest Portal are available at www.palintest.com and available for download from the Palintest Know portal.

Palintest Ltd

Palintest House, Kingsway, Team Valley,
Gateshead, NE11 0NS
Tel: +44 (0)191 491 0808
Fax: +44 (0)191 482 5372
sales@palintest.com (UK)
export@palintest.com (International)

Palintest Australia and Asia Pacific

1/53 Lorraine Street,
Peakhurst Business Centre,
Peakhurst, NSW 2210, Australia
Tel: +61 1300 131516
Fax: +61 1300 131986
palintest@palintest.com.au

Palintest USA

1455 Jamike Avenue (Suite 100),
Erlanger, Kentucky, 41018, USA
Tel: +1 859 341 7423
Toll Free: 800 835 9629
Fax: +1 859 341 2106
info@palintestusa.com

Palintest China

Room 1711, Fanli Mansion,
22 Chaowai Street, Chaoyang District,
Beijing, 100020, PRC
Tel: +86 10 6588 6200
Fax: +86 10 6588 8311
china@palintest.com

